

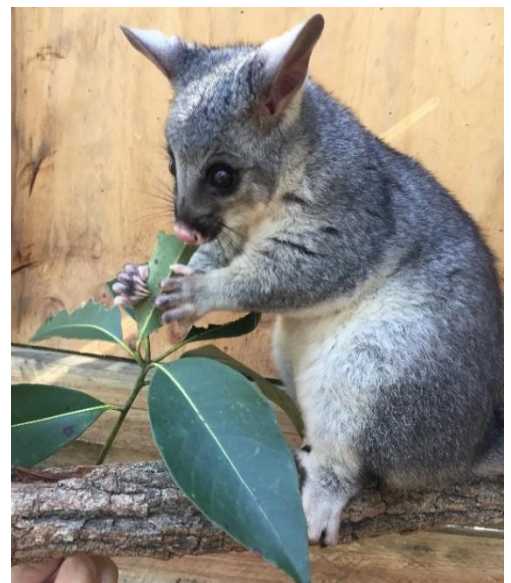


CARING FOR BRUSHTAIL POSSUMS

FOR FEEDING	FOR HOUSING	HYGIENE	WARNING SIGNS
<ul style="list-style-type: none"> ✓ Syringes - 5ml & 10ml in Glass or Plastic ✓ Bottles -10ml and 25ml ✓ Teats - Syringe Teats and Bottle Teats in Latex or Silicon ✓ Milk - For age Wombaroo <.8 >.8 ✓ Supplements - Wombaroo High Protein Powder, Spark or Lactade ✓ Feeding bowls- Small and Large ✓ Wipes - Unscented for toileting ✓ Bottle brush - Small for little bottles ✓ Scales - for weighing 	<ul style="list-style-type: none"> ✓ Insulated Bag ✓ Heat Pad ✓ Pouches ✓ Rescue Basket ✓ Small Cage ✓ Large Indoor Cage ✓ Outdoor Cage ✓ Aviary ✓ Open Possum Box ✓ Possum Box ✓ Perching ✓ Browse holders 	<ul style="list-style-type: none"> ✓ F10 ✓ Hand wash ✓ Nappy San ✓ Sensitive Washing Powder 	<ul style="list-style-type: none"> ✗ Diarrhoea ✗ Smelly poo ✗ If they are not alert ✗ Not drinking ✗ Behaviour changes ✗ Failure to gain weight

ADDITIONAL POINTS TO REMEMBER

- ✓ Wash your hands
- ✓ Check in with your mentor often
- ✓ Send through a list of the animals you have in care and their weights every week
- ✓ Weigh weekly
- ✓ Make up milk daily
- ✓ Collect fresh native Leaf/Browse daily or every second day
- ✓ Supplement feed is acceptable fruit and vegetables
- ✓ Must be vet checked after a rescue
- ✓ Check hydration daily
- ✓ Winter and Summer variations to husbandry
- ✓ Clean cages daily
- ✓ Keep them away from all domestic animals
- ✓ Minimise noise from children and music
- ✓ Feed them while they are in the pouch
- ✓ Toilet them in their pouch
- ✓ Social media consideration regarding appropriate animal pictures
- ✓ Social media conduct
- ✓ Read, understand and abide by the Code of Practice (Care of sick, injured or orphaned protected animals)
- ✓ Avoid heavily scented perfume
- ✓ Travel, Time and Food commitment
- ✓ Support people to help
- ✓ Be prepared to listen and learn
- ✓ We become their Mum/Dad
- ✓ What's best for them? They will be released
- ✓ When moving them outside make sure it's not windy





BRUSHTAIL POSSUM REFERENCE SHEET

Weight	Features	Number of Feeds	Time Between Feeds	Supplementary	Food Native Foliage	Housing
50g	No fur, eyes closed. Toothpaste consistency poo.	8 feeds/day	3 hourly around the clock. Syringe, teats.	Nil	Nil	In a pouch in Humidity Crib. Warmth 32-34°C.
100g	Just getting fur, eyes open. Thick toothpaste consistency poo.	6 feeds/day	4 hourly around the clock. Syringe or bottle.	Offer fruit, grape, apple, banana, carrot, corn etc.	Start to offer tips of native vegetation to pouch.	Rescue basket, hang pouch inside. May need heat 30-32°C. May start to explore.
150g	Fine soft fur, teeth. Thick tube like poo.	5 feeds/day	4 hourly. Syringe or bottle.	15g building up to 50g fruit & veg	Offer a variety of native vegetation freshly picked.	Small cage with pouch and branches. May need heat.
250g	Short dense fur. Darker tube like poo.	4 feeds/day	Milk 6 hourly – bottle.	50g to 70g of fruit & veg	Offer a variety of native vegetation freshly picked.	Large inside cage (1m x 1m x 1.2) with pouch, branches and rope.
400g	Short dense fur. Soft pellet poo. Toileting not needed.	3 feeds/day	Morning, afternoon and evening.	From 70g to 100g fruit & veg	Offer a variety of native vegetation freshly picked.	Large inside cage (1m x 1m x 1.2m). Very active at night.
500-650g	Would still back ride. Pellet poo. Should be lapping.	2 feeds/day	Morning and evening	100g - 150g fruit & veg	Increase native food. Large variety & quantity.	Large cage protected outside. Box, food and water placed high. Reduce human contact with possum.
900 g	Fully independent	1 feed/day	Evening	100g - 200g fruit & veg	Weaned 700g-900g or by pre-release stage. Eating native vegetation from release site picked fresh each day.	Walk in aviary, (3x2x2) water, branches, rope. Very active at night. Minimum human contact
1100g to 1500g	No milk. May be ready for release			100g - 200g	Native food from release site – large variety picked each day. Supplement (unless hard releasing)	Attach a rope or branch from aviary to a nearby native tree for soft release.

Wombaroo High Protein Powder added to Fruit & Vegetables

WOMBAROO FEED CHART

Milk	Age (days)	Tail (mm)	Foot (mm)	Head (mm)	Weight (g)	Feed (ml/day)	Notes
<0.8	80	67	21	36	42	10	
	90	82	26	41	58	13	
	100	98	30	45	80	17	Fine fur visible
	110	116	35	49	105	20	Eyes opening
Transition	112	120	36	50	112	20	15mL <0.8 + 5mL >0.8
	115	125	38	51	125	20	10mL <0.8 + 10mL >0.8
	118	131	40	53	140	20	5mL <0.8 + 15mL >0.8
>0.8	120	135	41	54	150	20	Emerging from pouch
	130	155	47	58	210	26	Fully Furred
	140	168	52	61	290	32	
	150	181	56	64	390	40	Fully out of pouch
Weaning	160	Growth rate now about 7-15 g per day				40	Feed volume now depends on amount of solids consumed
	180					20	
	200	Not Valid				0	Fully weaned
	250						Release Age